



A complete solution, because you
can't leave security to chance



Saab Australia is part of the Saab group, a global high-technology, defence and security business-to-government and business-to-business organisation.

Since inception over 80 years ago, Saab's vision has been to keep society and people safe. Saab's extensive portfolio has the whole defence and security spectrum covered with foolproof, operationally proven technology.

No other single technology company designs and builds such a wide range of systems including aircraft, submarines, underwater vehicles, combat management systems, missiles, torpedoes, radars, camouflage, communications, security systems and everything between.

saab.com.au



ONEVIEW

Protecting people,
assets & infrastructure

When safety and reputation matters

It’s a basic human need to feel safe. At Saab we believe safety is a human right. In fact, we’ve built an international reputation on reliable, innovative technology designed to keep people and society safe.

Saab’s OneView™ is a complete security solution that significantly improves the response process to security crises. It provides accurate situational awareness, communication and response management allowing control room staff to rapidly diffuse threatening situations.

By integrating your security system and building management systems into one seamless situational awareness view, with built-in intelligence applied, OneView brings clarity and speed to what would otherwise be a stressful, slower process to manage. You can manage video, perimeter security, access controls, duress alarms, biometrics, intruder detection, intercoms, key safes—any security product—through OneView’s single, ‘user-friendly’ interface.

It is the ultimate top level security solution for government agencies, utility managers or commercial enterprises invested in the safety of people, infrastructure and assets.

Subsystem integration

OneView offers unparalleled levels of subsystem integration with high availability for mission critical infrastructure environments. Our team can rapidly integrate any security or building management subsystem that supplies information or functionality to complete your security picture.

Power by design

OneView’s true strength lies in its absolute versatility. You are not locked into using propriety subsystem hardware. The user interface and functionality is easily configured to address your unique problems, processes and policies. Operator station layouts, system instructions defining which equipment is linked, and what action is performed on various alarms and events are all customisable. Everything is totally configurable, such as maps, icons, cameras appearing on the user interface, the business logic being applied to different alerts, the interface colours, or sounds, whatever makes sense for your way of working.

Complete choice

OneView is built on open standards and non-proprietary interfaces so you can integrate your existing systems or choose the sensors and controls you prefer. This is a lower cost and more flexible approach than some traditional product-biased integrators who lock you into purchasing their proprietary products. For example, you could have three different CCTV systems, two access control systems and five alarm systems all feeding into OneView making them all look and behave the same. Saab tailors OneView to the optimal level of control required for each subsystem. For the control room operator, it could not be easier and your financial controller will be happier.

Easy to use and manage

The point-and-click interface is very fast and simple to use so operators remain calm and in control. The user-friendly interface presents your facility or environment in a clickable map view similar to ‘Google Maps’ allowing operators to click, drag, pan and zoom to navigate instantly in real-time.

All information is provided and actioned from the single window, which means users do not need to learn each subsystem software. Security sensors, alarms and response are all managed and controlled from OneView which pushes out alerts to the operator, revealing breaches on the map visually with supporting video feeds or other location relevant information. Pre-programmed instructions also prompt the operator with the appropriate action and workflow.

Embedded Workflow

OneView supports fully embedded Standard Operating Procedures (SOP) and provides dynamic decision tree support to an operator’s response to each routine activity or alarm event. SOP workflow steps can be driven by manual operator decisions, or by automated decision making rules, using live or historical data found in the system. Workflows can also make use of programmable schedules for mandated operator activities at specific times, and can make use of information like site operating hours, time zone and public holiday status to make better decisions in the workflow.

Small footprint

Saab’s server virtualisation solution means fewer servers, fewer racks and smaller server rooms. Power requirements, air-conditioning load and CO² emissions are reduced.

High availability & fault tolerance

System fault tolerance and automatic backup switching is seamless and transparent to the operator ensuring high availability for critical infrastructure . Updates can be deployed to live systems with zero down time.

Fully integrated system log

Accurate after-action reports are quickly created from the integrated automated system logs. This includes all sub-system events, alarms, state changes and operator actions, which are stored and linked with recorded video in the system journal. This dramatically simplifies post action search, collation, analysis and reporting.

Built-in reporting

Customisable reporting from the system log means you’ll meet all your regular status reporting and any ad-hoc post action analysis reporting requirements. Automatic, periodic and manual reports are integrated with email and SMS to allow fully flexible and configurable reporting to those that need to know.

Definable operator roles

Operator roles grant different views and privileges to tailor each user and operator station to their role, ensuring system integrity and functionality as required.

Built-in cyber resilience

Cyber hardening has been built into OneView at the core, using our threat and risk assessment process as the basis for addressing the Cyber risks. Starting with utilisation of Microsoft’s secure coding standards for our software development practices, we also utilise encryption, certificates and tokens to secure communications between components of the system. Operator authentication and linking back into the customers security infrastructure is a key element to control access to the system and data. OneView’s cyber hardening combined with extensive lockdown of the operating system provide a resilient platform that has successfully passed multiple penetration testing attempts. Saab Australia is certified to the Information Security Management System standard ISO 27001:2013.

Design and support

OneView is Australian designed and engineered. Our development team can work with you needed to understand the unique systems, standards and protocols of your security requirements. OneView installations are supported by our rapid-response technical teams.

Dynamic hierarchical control

Sub-system control can be passed to other operator stations quickly and easily. This means facility control can be centralised or decentralised at will, depending on operational circumstances.

Reliable, fast and cost efficient

Now in it’s fourth generation, OneView continues to outperform competitors in stability, reliability and speed. This highly-efficient system is the fastest of its kind, providing instant information intuitively. Its simplicity also boosts operator efficiency, speed and reliability which ultimately minimises risk. Overall, considerable cost savings are made by reducing traditional security monitoring roles, as well as lower on-going training and support costs.

Fast to implement

System configuration is managed through a comprehensive configuration tool. The tool provides the ability to directly import CAD drawings and recognise different types of security alarm points to automatically populate screen maps. This greatly reduces the effort to configure the system and enhances the accuracy and alignment with the as-designed site. The ability to link alarm points together and define unique business rules for each point enhances the operational efficiency and effectiveness of the system.



OneView is a solution designed that secures critical infrastructure and keeps people safe. What you can expect from the leading physical security information system

OneView spotlight

Fail-proof security management and control tailored for any public safety or infrastructure security situation. The people, infrastructure and assets in your care deserve the best protection.

Corrections security

OneView has quickly become the physical security information management system of choice in Australia’s correctional sector. Notably the system was selected to secure Australia’s largest, maximum security prison for its speed, reliability, ultimate flexibility/scalability and overall value from investment.

Installed in over fifty sites across the nation, OneView integrates cameras, video replay, alarms, doors, intercoms, PA, gates, perimeter detection, key safes, duress, biometrics, fire and building management, facial recognition, numberplate recognition, video analytics and information data bases such as prisoner offender management systems.

OneView provides correctional specific functionality such as movement control to plan, initiate, monitor, alert and report on inmate movements throughout a facility, significantly reducing manpower for corrections officers. Other unique features include incident management, white level inspections, observation cell monitoring and support for hierarchical control rooms.

Complex facilities rely on a sophisticated security organisations, like Saab, to handle major projects and have the financial backing, management and engineering capacity demanded by these larger more complex projects.

Facility management

OneView provides the ability to deliver situational awarness and alarm/event management for a single site or across multiple sites. By integrating a suite of systems and sensors that span security, building management and operational systems, OneView provides facility managers with the awareness they need to have their total site under control.

By combining status information and linking assets, the control room operator and system users can assess and respond to a wide range of incidents and issues. These include security, maintenance and operational needs, ultimately improving the efficiency and safety of a complex facility.

OneView is capable of integrating existing infrastructure or working with new systems on greenfield sites. In both cases, it unifies the control room and provides total site situational awareness across a diverse set of systems and sensors.

Security monitoring centres

As well as being the product of choice for individual sites, OneView also provides a compelling solution to monitor and manage security and facility status across distributed locations. As a tailored and flexible solution, OneView has also been delivered as the keystone solution for Security Operations Centre control rooms. This application of OneView has recently secured a network of over 2,000 secure sites and assets across Australia. The system standardises alarm and event response by operators with full traceability and reduces operator workload through automated system and sensor status checks as part of handling security related events.

Operator training time is dramatically reduced by having a single application to access CCTV, HR data, Asset Data, Alarms, Events and Reporting, as well as integrating with response management systems. All this in an open software platform that can be easily configured to meet the continually changing needs of the organisation, adding/deleting new sites, assets , sensors and changing workflows.

Applications across society

OneView has a wide range of applications for any major infrastructure or industry.



banks



sport



mining



prisons



transport



ports



utilities



universities



casinos



airports



hospitals

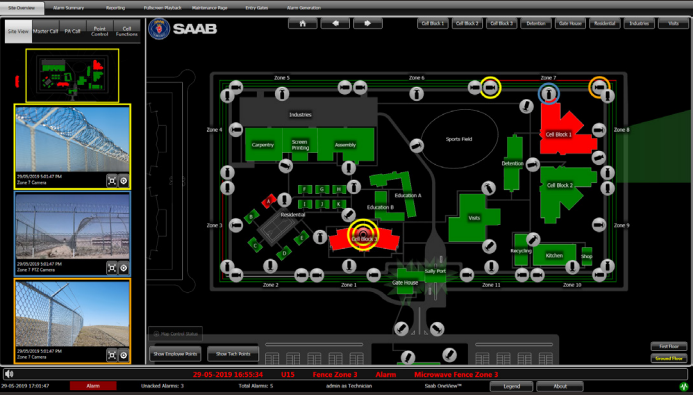


public spaces

Complexity under control.

The single, simple interface reduces information fatigue. Only see what needs attention or further interrogation.

Pop-up ‘event’ notifications give operators information and complete control of situations detected by the system. Subsystem sensors and pre-programmed instructions trigger events which OneView visually indicates by zooming the view to the location of the event. Procedural anomalies such as a door alarm being tripped or a camera activated at an odd time can also trigger events.



From the event pop-up, users can zoom in, view co-located cameras, open doors, run reports and other predefined required actions. The same control can be applied to manage resources and tasks. For example, an operator may want to send procedures to security guards on a mobile device or track their location, it’s up to the user. This level of power is only possible through OneView’s seamless access to multiple underlying subsystems.